



**SCHAEFER 25M**



**SCHAEFER 25M**



SCHAEFER  
25M



SCHAEFER  
25M



SCHAEFER  
**25M**



SCHAEFER  
**25M**



SCHAEFER  
25M



SCHAEFER  
25M





SCHAEFER  
25M



SCHAEFER  
25M



SCHAEFER  
25M



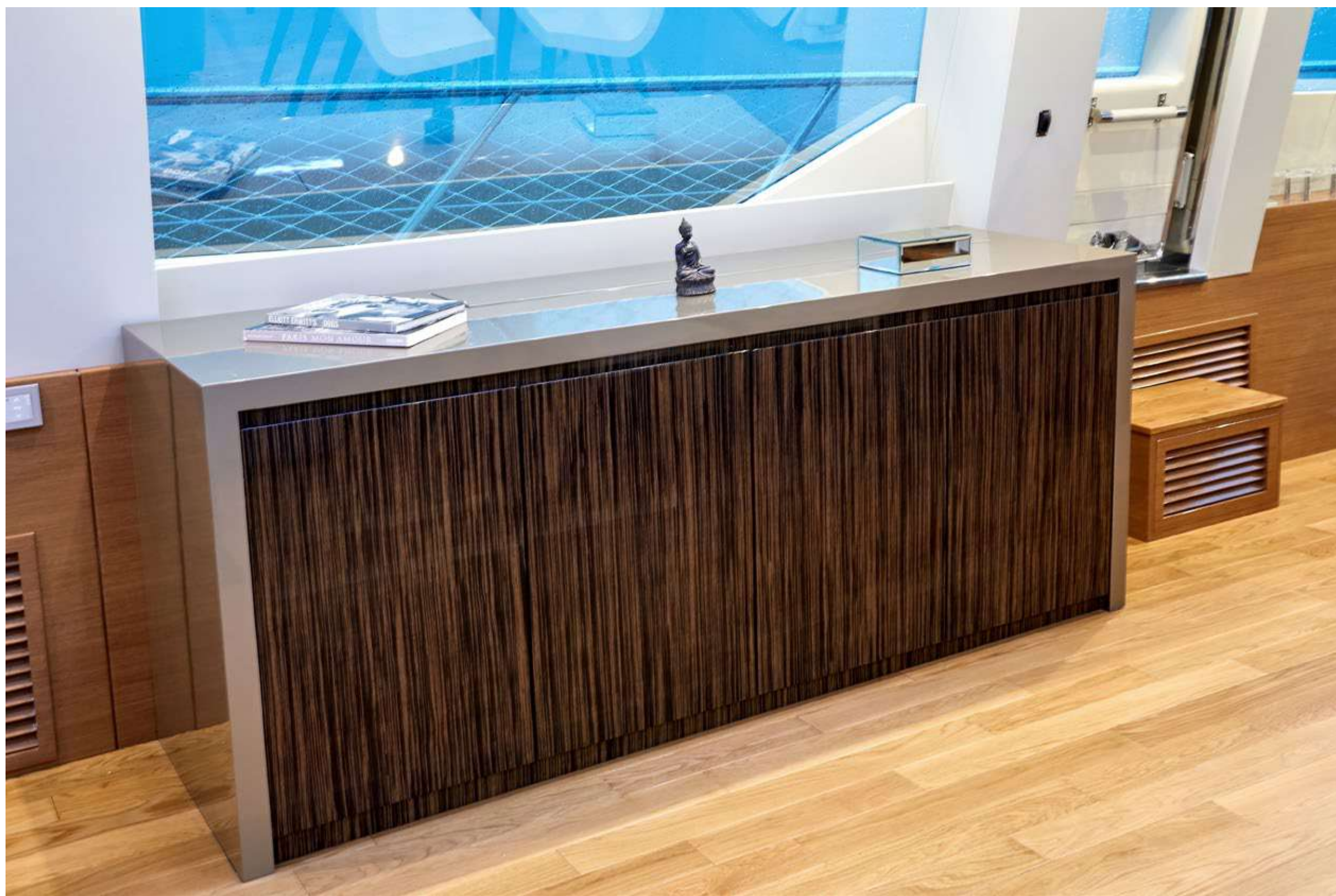
SCHAEFER  
25M



SCHAEFER  
25M



SCHAEFER  
25M



SCHAEFER  
25M



SCHAEFER  
**25M**





SCHAEFER  
25M



SCHAEFER  
25M



SCHAEFER  
25M



SCHAEFER  
25M



SCHAEFER  
25M



SCHAEFER  
25M



Max. length (including pulpit and platform): 24.75 m (81.2')

Max beam (including guardrails): 6.13 m (20.1')

Max. draught: 1.77 m (5.8')

Light craft mass: 51,200 kg (112,876 lbs)

Deadrise angle: 14.7°

Max. speed\*: 34 knots

Cruising speed\*: 26 knots

Fuel consumption at cruising speed\*\*: 294L/h (78 Gal/h)

Range: 281 N.M.\*\*

Fresh water capacity: 1,200 L (317 Gal)

Fuel capacity: 4,700 L (1,242 Gal)

Holding tank capacity: 630 L (166 Gal)

Installed gensets: 2 x 21.5 kW

Air draught: 8.04 m (26.4')

count extra 5' for clearance when passing under bridges.

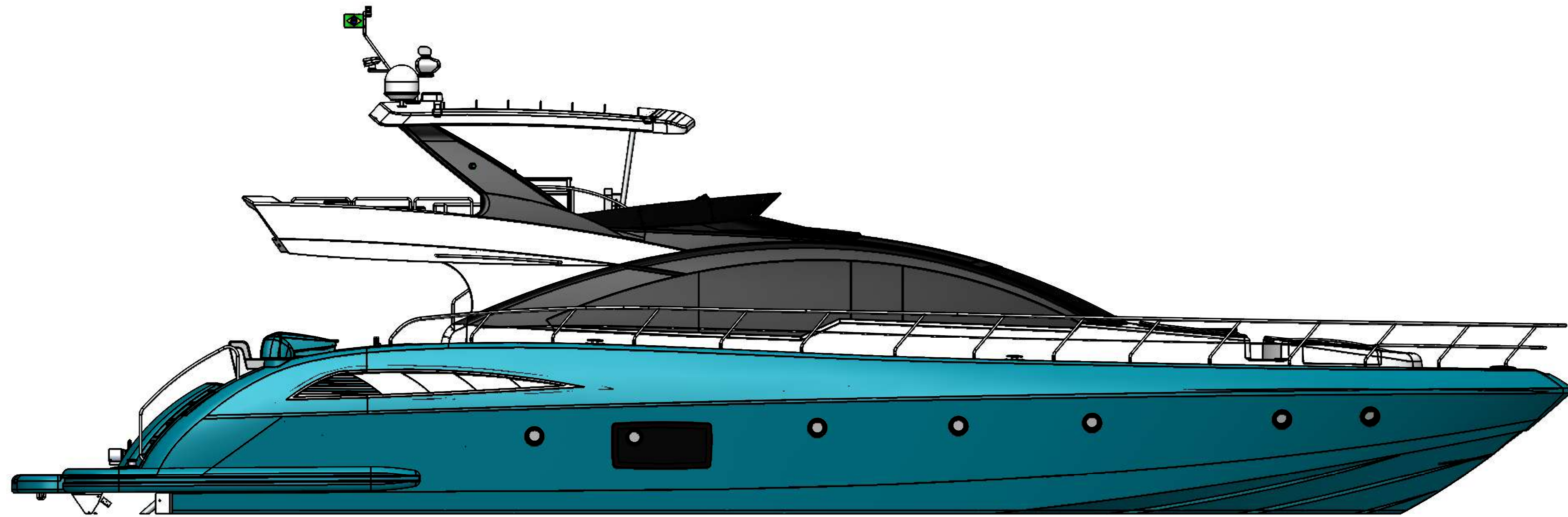
Passenger capacity(day): 21

Passenger capacity(night): 9+3

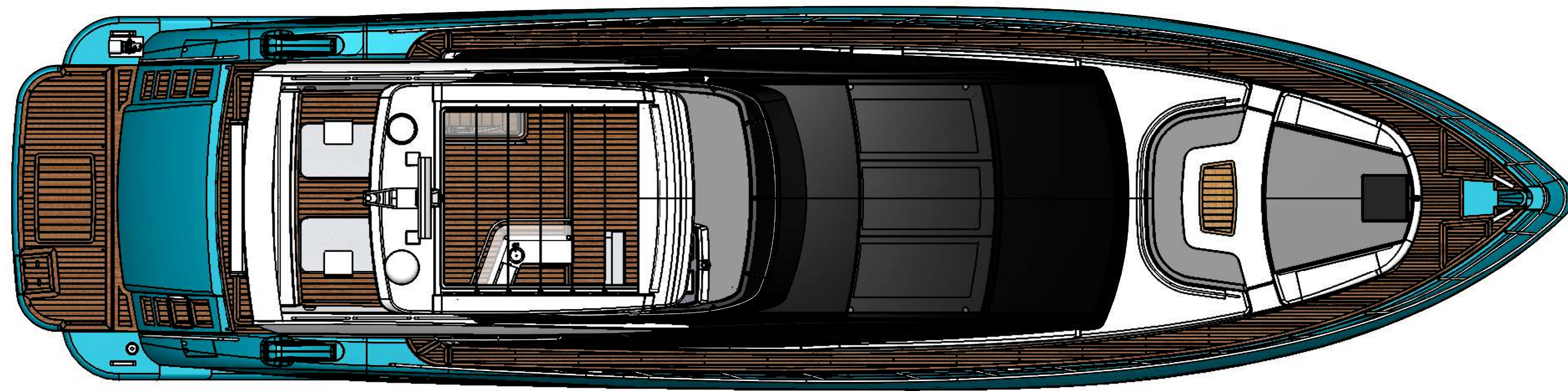
Designer: Marcio Schaefer

*\* Tests performed in flat water, without excessive wind, no anti-fouling paint and with clean hull and propellers. The engines used on the test were 3 x Volvo Diesel IPS 1200.*

*\*\* The maximum speed and cruising speed data as well as fuel consumption and trip duration depend on the onboard loading conditions, ambient temperature, ambient pressure, fuel line, sea state, current, hull bottom condition and stern drive, axles, propellers. There may still be a variation of 7%.*

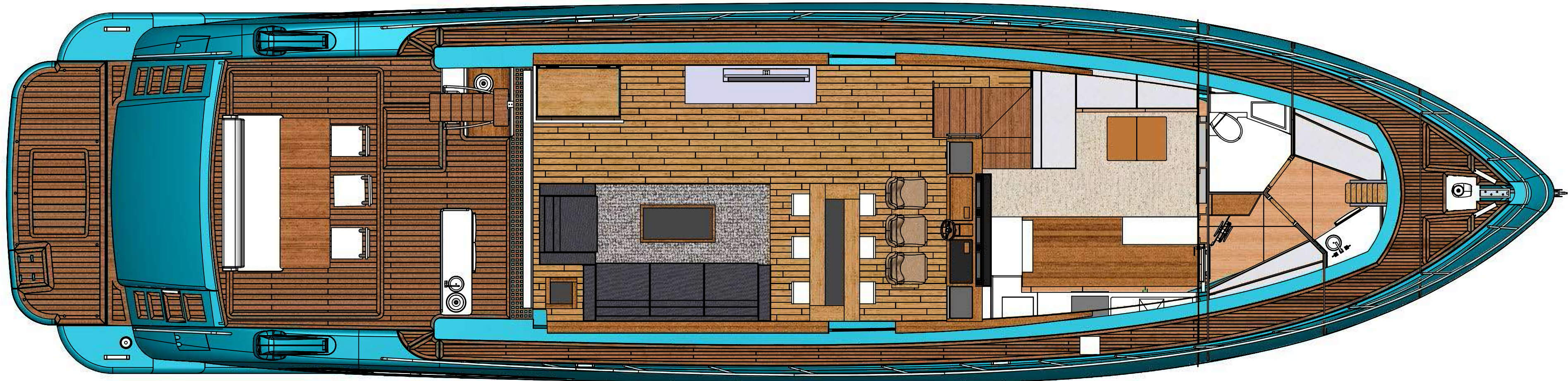


SIDEVIEW

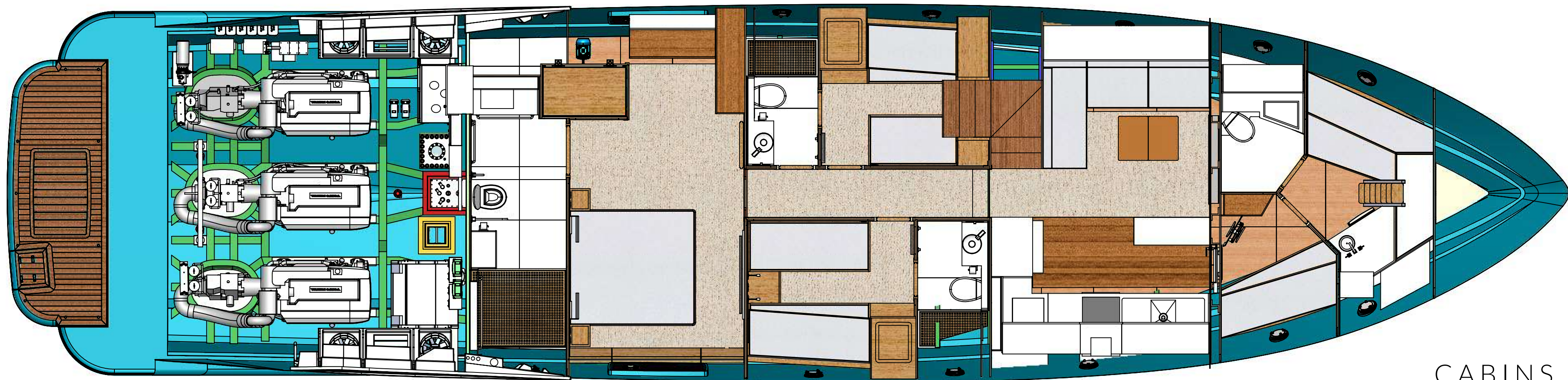


FLYBRIDGE





DECK



CABINS



SCHAEFER  
25M

260 - 303 - 365 - 375 - 400

---

FLY - 400 - 510 - 580 - 660 - 770 - 25M

*[schaeferyachts.com](http://schaeferyachts.com)*

